



SANME



山美

PP 系列 轮式移动破碎站

PP Series Portable Crushing Plants



上海山美环保装备股份有限公司
SHANGHAI SANME MINING MACHINERY CORP., LTD.
(中德合资控股)
(Sino-German JV Holding)

山美，追求完美 SANME, Aiming For Perfection

上海山美环保装备股份有限公司（原上海山美重型矿山机械股份有限公司），是中德合资控股企业，绿色砂石骨料生产系统完整解决方案专家，固废处理及资源化领域综合服务提供商。

公司总部位于上海，拥有现代化制造车间、研发中心和集团管理中心。企业除了可以制造成套破碎筛分装备，还能够提供全系列破碎筛分完整解决方案，包括骨料生产线EPCO及矿山设计运营总承包服务。

山美股份依托中德合资技术，精良的装备制造能力，以及成熟的解决方案交钥匙能力，在绿色砂石骨料生产、建筑废弃物资源化利用、矿物加工等行业和领域得到广泛应用，已与拉法基、豪瑞、中材国际、中国建材、中联水泥、华新水泥、海螺水泥、东方希望、首钢资源、中天集团、中城绿建等中外知名企业成功合作，成为国内外砂石骨料、建筑固废等大型建材、环保企业的连续供应商，为其提供了技术成熟、性能优良的绿色智能砂石骨料生产线和建筑废弃物循环利用示范生产线，并已出口到世界上一百多个国家和地区，包括欧洲、美国、澳洲、新西兰等。

我们的目标是为全球客户提供值得信赖的产品和服务，为客户创造价值。

Shanghai SANME Mining Machinery Corp., Ltd. is a Sino-German JV holding company, total solution expert for green aggregates processing, and integrated service provider for solid waste recycling.

SANME is headquartered in Shanghai with modern manufacturing workshop, research and development center, and group management center. We could not only manufacture complete sets of advanced crushing and screening equipment, but also could provide all ranges of crushing and screening equipment total solutions, including EPCO service for aggregates production line and turn-key service for minerals processing operation.

Based on advanced Sino-German technology, excellent equipment manufacturing capability and mature capability of turn-key solution, SANME has widely applied in green aggregates production, construction waste recycling, and minerals processing, etc. SANME has successfully cooperated with many famous enterprises such as Lafarge, Holcim, Sinoma, CNBM, Huaxin Cement, Conch Cement, and Shougang Steel Resources. SANME is the continuous supplier of large-scale building material and environmental protection enterprises. Our products have been exported to over 100 countries and regions, including Europe, America, Australian, New Zealand, etc.

Our aim is to provide reliable products and services for global customers and create values for our customers.



PP 系列轮式移动破碎站

PP Series Portable Crushing Plants

产品系列 Product Presentation

颚式破碎站 Jaw Plants

PP231JC
PP340JC
PP440JC
PP443JC
PP549JC

圆锥式破碎站 Cone Plants

PP120SMH(S)
PP2000SMS(S)
PP250SMH(S)
PP100(S)SMGS
PP200(S)SMGS
PP300(S)SMGS

反击式破碎站 Impact Plants

PP128HC
PP139HC(S)
PP239HC(S)
PP255HC(S)
PP359HC(S)
PP459HC

立式冲击破碎站 VSI Plants

PP5000VSI
PP5000VSIS
PP6000VSI
PP6000VSIS
PP7000VSI
PP7000VSIS



PP 系列轮式移动破碎站采用专业的移动破碎技术，能够完全满足客户的移动破碎要求，同固定式破碎设备相比较，能够大大降低客户的运营成本。

PP Series Portable Crushing Plants adopt the professional mobile crushing technology. They can fully meet customers' different mobile crushing requirements. Compared with the stationary crushing plant, they can greatly reduce the customers' operation cost.



PP系列轮式移动破碎站具有如下优异性能：

The Outstanding Performance of PP Series Portable Crushing Plants :



移动性强：

PP 系列轮式移动破碎站长度短，不同的破碎设备分别安装在独立的可移动底盘上，轴距短，转弯半径小，可以在普通公路上及作业厂区内灵活行驶。

Great Mobility :

PP Series Portable Crushing Plants are of short length. Different crushing equipment is separately installed on a separate mobile chassis. Its short wheelbase and tight turning radius mean they can be transported on highway and moved at crushing sites.



降低物料运输成本：

PP 系列轮式移动破碎站可以在现场加工物料，而不必将物料搬离现场再加工，大大地降低了物料运输成本。

Lower Transportation Cost :

PP Series Portable Crushing Plants can crush materials on-site. It is unnecessary to carry the materials from one site and then crush them in another one, which can greatly lower the transporting cost for off-site crushing.



组合灵活，适应性强：

PP 系列轮式移动破碎站可根据不同的破碎工艺要求组成“先碎后筛”，也可组成“先筛后碎”流程，破碎站可按实际需求组合成粗碎、细碎两段破碎筛分系统，也可组合成粗碎、中碎、细碎三段破碎筛分系统，还可以独立运行，有很大的灵活性。

Flexible Configuration and Great Adaptability:

According to the different requirements of different crushing process, PP Series Portable Crushing Plants can form the following two processes of “crushing first, screening second” or “screening first, crushing second”. The crushing plant can be composed of two-stage plants or three-stage plants. The two-stage plants consists primary crushing plant and secondary crushing plant, while the three-stage plants includes primary crushing plant, secondary crushing plant and tertiary crushing plant, each of which is of high flexibility and can be used individually.

PP系列轮式移动破碎站具有如下设计特点：

The Design Features of PP Series Portable Crushing Plants :



移动底盘设计符合国际标准，拥有符合规范的灯光和制动系统。底盘采用大截面型钢，为重载设计。

Mobile chassis conforms to the international standards. It has standard lighting and braking system. The chassis is heavy-duty design with big section steel.



移动底盘采用 U 型梁设计，降低了移动站的整体高度，大大降低了破碎物料的装运成本。

The girder of mobile chassis is designed to be U style so that the overall height of the mobile crushing plant is reduced. So the loading cost is reduced greatly.



采用液压支腿（选装），便于现场安装；料仓采用组合设计，大大降低运输高度。

Adopt hydraulic leg(optional) for lift installation.Hopper adopt unitized design,reduce the transport height greatly.



PP系列移动颚式破碎站 PP Series Portable Jaw Plants

型号 Model	PP231JC	PP340JC	PP440JC	PP443JC	PP549JC
运输尺寸 Transport Dimensions					
长 Length(mm)	10650	11150	12910	14400	14400
宽 Width(mm)	2550	2780	3120	2950	2950
高 Height(mm)	3900	4019	4438	4590	4590
重量 Weight(kg)	26800	41600	60100	70400	86000
轴重 Axle Weight(kg)	16800	26800	38800	46400	55000
牵引销荷重 King Pin Weight(kg)	10000	14800	21300	24000	31000
颚式破碎机 Jaw Crusher					
型号 Model	JC231	JC340	JC440	JC443	JC549
给料口 Feed Opening(mm)	510x800	600x1020	760x1020	850x1100	950x1250
出料口调整范围 Setting Range(c.s.s)(mm)	40-150	60-175	70-200	80-215	110-250
产量 Capacity(t/h)	50-250	85-300	120-520	170-625	260-810
给料机 Feeder					
型号 Model	GZT0932Y	ZSW380x95	ZSW490x110	ZSW600x130	ZSW600x130
料仓容积 Feed Hopper Volume(m ³)	6	7	8.4	10	10
料仓宽 Hopper Width(mm)	3150	3000	3000	3000	3000
皮带机 Belt Conveyor					
型号 Model	B800x6.8	B1000x7.2	B1000x7.5	B1200x8.3	B1200x8.3



PP系列移动圆锥式破碎站 PP Series Portable Cone Plants

型号 Model	PP120SMH3S	PP2000SMS2S	PP2000SMS4S	PP250SMH3S	PP250SMH4S
运输尺寸 Transport Dimensions					
长 Length(mm)	13920	15000	15000	15690	15690
宽 Width(mm)	2780	2780	2910	3280	3300
高 Height(mm)	4340	4350	4300	4500	4500
重量 Weight(kg)	33000	37500	41000	53000	54600
轴重 Axle Weight(kg)	21000	26000	25200	34500	35800
牵引销荷重 King Pin Weight(kg)	11000	11500	15700	18500	18800
圆锥破碎机 Cone Crusher					
型号 Model	SMH120	SMS2000	SMS2000	SMH250	SMH250
最大进料 Feed Opening(mm)	50-160	60-180	60-180	80-240	80-240
出料口调整范围 Setting Range(c.s.s)(mm)	9-32	9-32	9-32	9-51	9-51
振动筛 Screen					
型号 Model	3YK1548	2YK1860	4YK1860	3YK2160	4YK2160
皮带机 Belt Conveyor					
型号 Model	B800x7.4	B1000x8.2	B1000x8.2	B1000x8.2	B1000x8.2
轴数 Number of Axles	2	2	3	3	3



PP系列移动圆锥式破碎筛分站 PP Series Portable Cone Plants

型号 Model	PP120SMH	PP2000SMS	PP250SMH
运输尺寸 Transport Dimensions			
长 Length(mm)	11200	11200	11500
宽 Width(mm)	2780	2780	2780
高 Height(mm)	3900	4160	4180
重量 Weight(kg)	26200	28500	36100
轴重 Axle Weight(kg)	17300	18100	25800
牵引销荷重 King Pin Weight(kg)	8900	10400	10300
圆锥破碎机 Cone Crusher			
型号 Model	SMH120	SMS2000	SMH250
最大进料 Feed Opening(mm)	50-160	60-180	80-240
出料口调整范围 Setting Range(c.s.s)(mm)	9-32	9-32	9-51
皮带机 Belt Conveyor			
型号 Model	B800x6.7	B800x6.7	B1000x7.2
轴数 Number of Axles	2	2	2



PP系列移动圆锥式破碎站 PP Series Portable Cone Plants

型号 Model	PP100SMGS	PP100(S)SMGS	PP200SMGS	PP200(S)SMGS	PP300SMGS	PP300(S)SMGS
运输尺寸 Transport Dimensions						
长 Length(mm)	13920	13920	14323	14323	13920	13720
宽 Width(mm)	2780	2780	3070	3070	2780	2780
高 Height(mm)	4300	4430	4585	4585	4450	4645
重量 Weight(kg)	28000	34400	43100	45600	48700	53900
轴重 Axle Weight(kg)	19800	20600	25100	26400	31500	33500
牵引销荷重 King Pin Weight(kg)	8200	9600	18000	19200	17200	20400
圆锥破碎机 Cone Crusher						
型号 Model	SMG100	SMG100S	SMG200	SMG200S	SMG300	SMG300S
最大进料 Feed Opening(mm)	38-150	200-240	70-200	300-360	70-215	400-450
出料口调整范围 Setting Range(c.s.s)(mm)	4-32	22-38	8-38	22-54	10-44	29-54
处理量 Capacity(t/h)	25-120	70-135	63-215	105-330	95-368	215-586
振动筛 Screen						
型号 Model	3YK1548	3YK1548	3YK1860	3YK1860	3YK2160	3YK2160
皮带机 Belt Conveyor						
型号 Model	B800x7.4	B800x7.4	B1000x8.2	B1000x8.2	B1000x8.2	B1000x8.2
轴数 Number of Axles	2	2	2	2	3	3



PP系列移动立式冲击破碎站 PP Series Portable VSI Plants

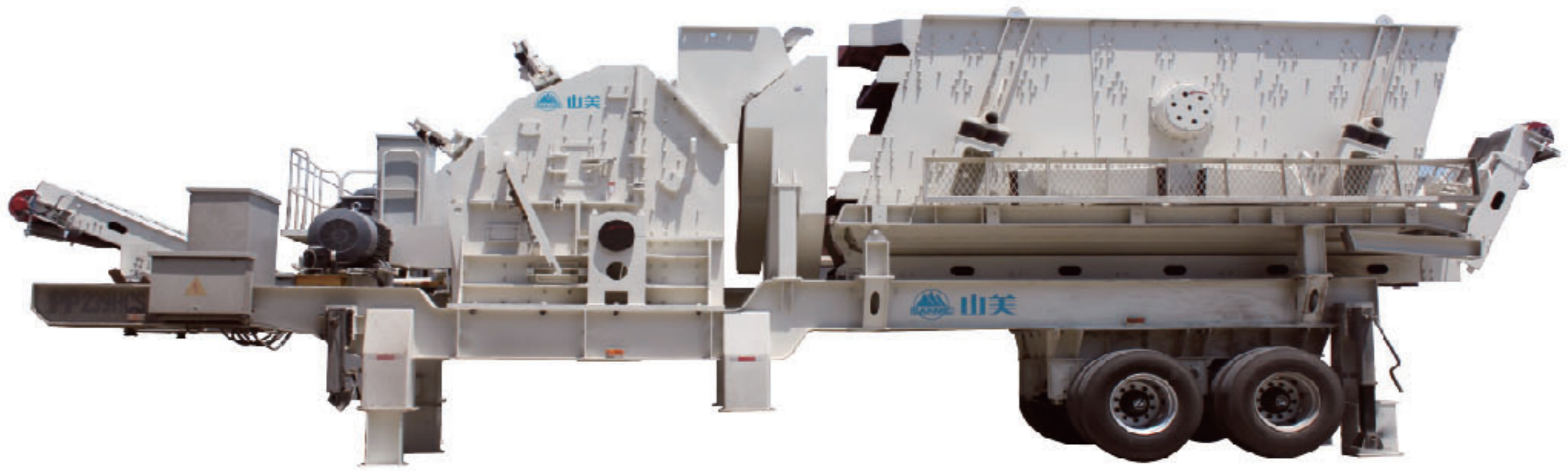
型号 Model	PP5000VSI	PP5000VSI S	PP6000VSI	PP6000VSI S	PP7000VSI	PP7000VSI S
运输尺寸 Transport Dimensions						
长 Length(mm)	9800	11280	11500	15470	14000	15420
宽 Width(mm)	2490	2780	2780	2780	3300	2780
高 Height(mm)	4200	4100	3850	4180	4160	4250
重量 Weight(kg)	21600	28000	22100	32600	23200	33200
轴重 Axle Weight(kg)	14600	19200	15100	22300	15100	21700
牵引销荷重 King Pin Weight(kg)	7000	8800	7000	10300	8100	11500
立式冲击破碎机 VSI Crusher						
型号 Model	VSI-5000	VSI-5000	VSI-6000	VSI-6000	VSI-7000	VSI-7000
最大给料尺寸 Max Feed Size(mm)	65(80)	65(80)	70 (80)	70 (80)	70 (80)	70 (80)
通过量 Throughput Capacity Range(t/h)	80-150	80-150	120-250	120-250	180-350	180-350
振动筛 Screen						
型号 Model		3YK1548		3YK1860		3YK2160
皮带机 Belt Conveyor						
型号 Model	B650×6.5Y	B800×7.2Y	B800×6.7Y	B1000×8.6Y	B1000×8.2Y	B1000×8.6Y
轴数 Number of Axles	1	2	2	2	3	2



PP系列移动反击式破碎站 (初碎)

PP Series Portable Impact Plants (Primary)

型号 Model	PP128HC	PP139HC	PP239HC	PP255HC	PP359HC	PP459HC
运输尺寸 Transport Dimensions						
长 Length(mm)	10850	10800	11030	11490	13670	13670
宽 Width(mm)	2780	2780	2780	2880	3110	3110
高 Height(mm)	4400	4400	4370	4460	4780	4890
重量 Weight(kg)	27000	30000	37700	48440	60100	63500
轴重 Axle Weight(kg)	18500	19000	25600	30920	38800	39500
牵引销重 King Pin Weight(kg)	8500	11000	12100	17520	21300	24000
反击式破碎机 Impact Crushers						
型号 Model	HC128	HC139	HC239	HC255	HC359	HC459
最大给料边长 Max Feed Size(mm)	300	400	500	500	600	750
通过量 Throughput(t/h)	40-70	50-80	100-180	100-290	160-250	220-450
给料机 Feeder						
型号 Model	GZT0724	GZT0724	GZT0932	ZSW380x95	ZSW490x110	ZSW490x110
料仓容积 Feed Hopper Volume(m ³)	3.2	3.2	7.6	9	10	10
皮带机 Belt Conveyor						
型号 Model	B500x7.5	B800x7	B800x7.5	B1000x8	B1000x8	B1200x8.3
永磁自卸式除铁器 Permanent Magnetic Separator						
除铁器 Magnetic Separator	选装 optional	选装 optional	选装 optional	选装 optional	选装 optional	选装 optional

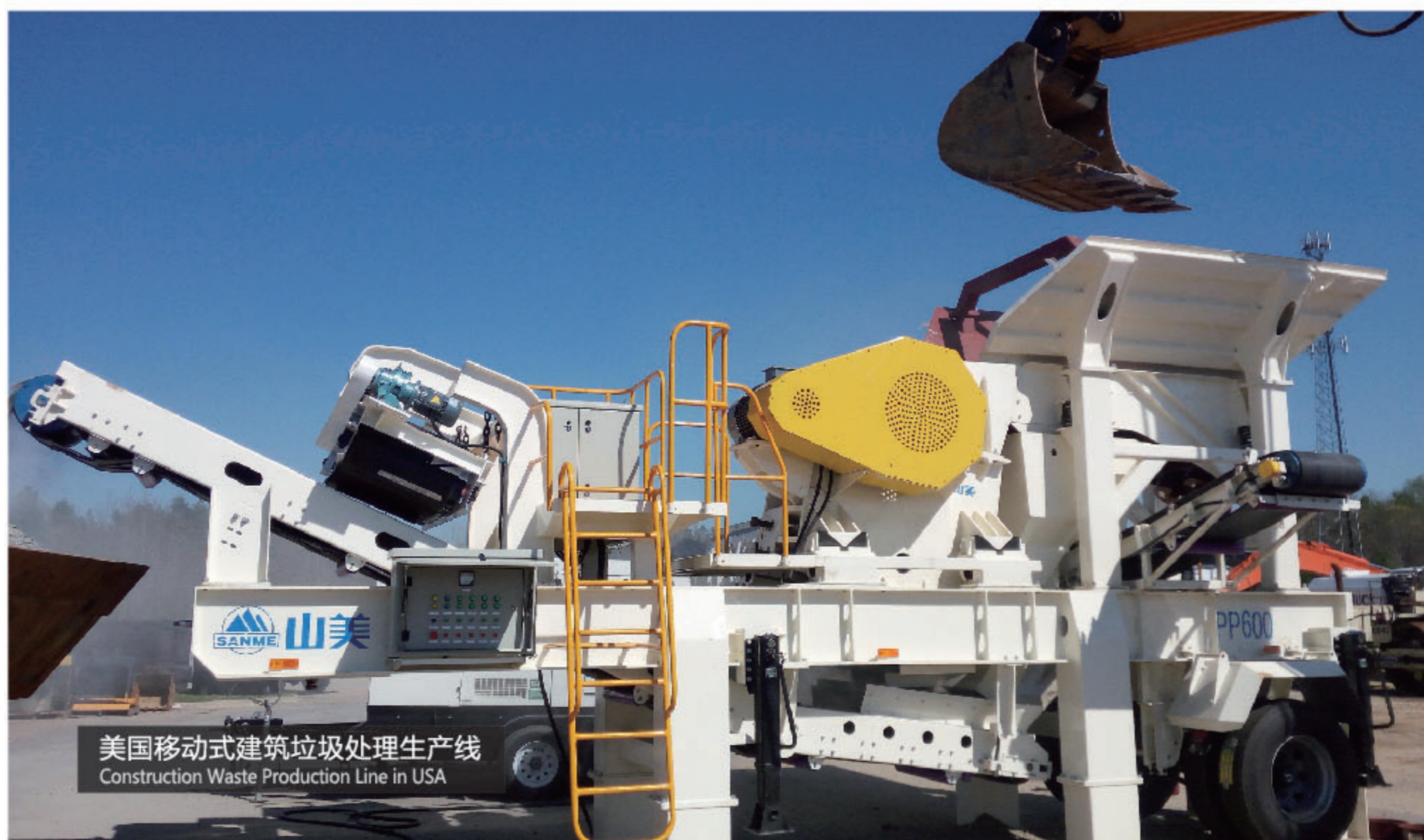
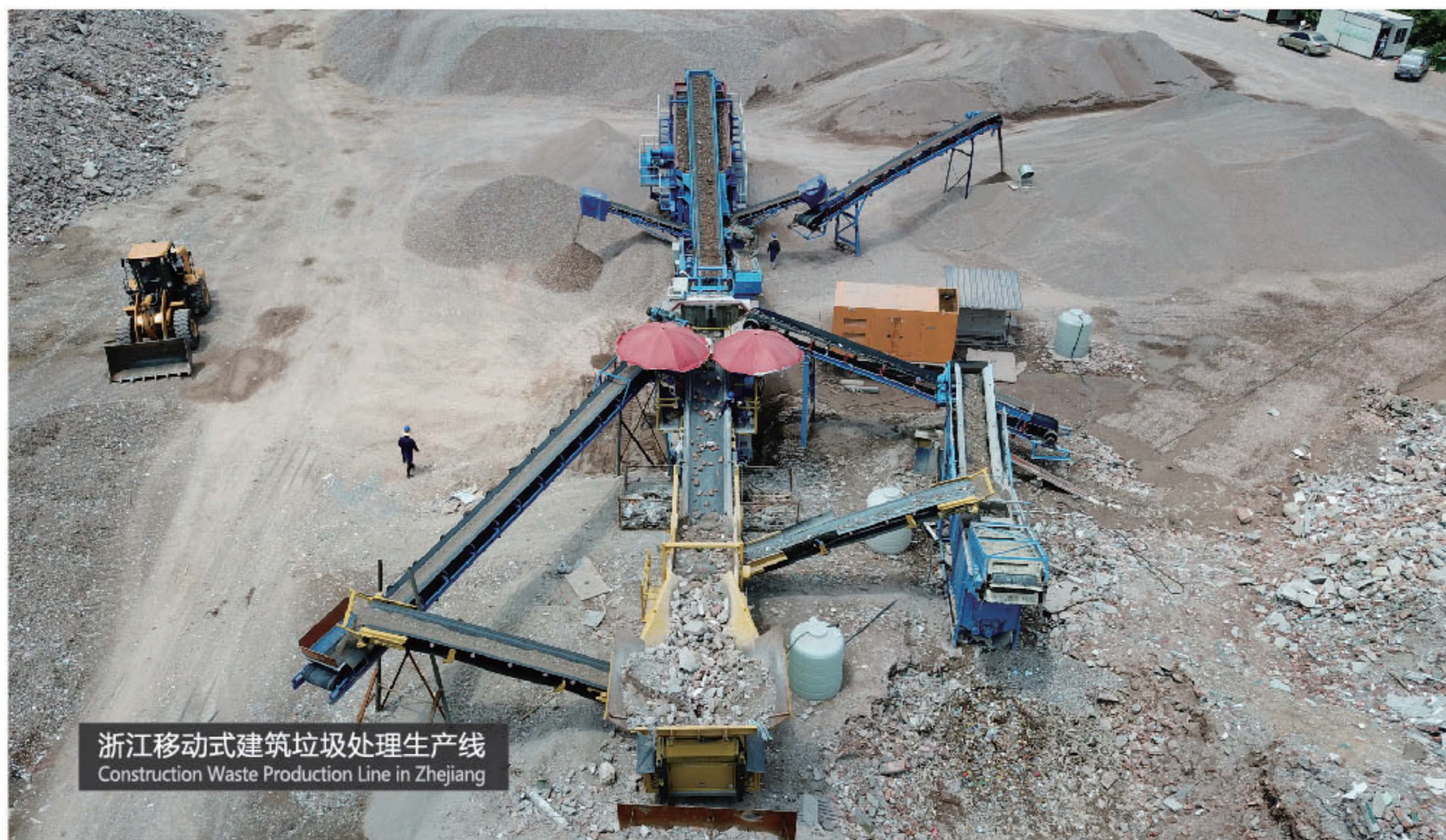


PP系列移动反击式破碎站 (中碎)

PP Series Portable Impact Plants (Secondary)

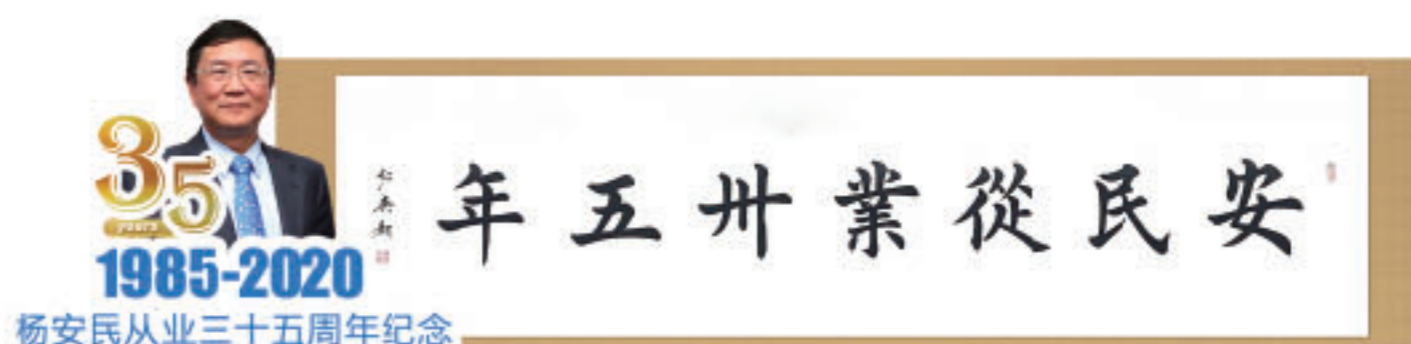
型号 Model	PP139HCS	PP239HCS	PP255HCS	PP359HCS
运输尺寸 Transport Dimensions				
长 Length(mm)	10800	13800	14700	14500
宽 Width(mm)	2480	2743	2900	3000
高 Height(mm)	4170	4200	4420	4200
重量 Weight(kg)	28800	35000	40300	47000
轴重 Axle Weight(kg)	15900	24500	26000	32400
牵引销重 King Pin Weight(kg)	11300	10500	14300	14600
反击式破碎机 Impact Crusher				
型号 Model	HC139	HC239	HC255	HC359
最大给料边长 Max Feed Size(mm)	400	500	500	600
通过量 Throughput(t/h)	50-80	100-180	100-290	160-250
皮带机 Belt Conveyor				
型号 Model	B650x6.2	B800x7.4	B800x8.2	B1000x8.2
振动筛 Screen				
型号 Model	3YK1235	3YK1548	3YK1860	3YK2160

工程实例 Project Example



工程实例 Project Example





上海山美环保装备股份有限公司
 SHANGHAI SANME MINING MACHINERY CORP., LTD.
 (中德合资控股)
 (Sino-German JV Holding)

地址：上海市奉贤区青村镇奉村路 258 号
 邮编：201414
 电话：021-5759 1166 5759 1188
 传真：021-5756 6188 5820 0089
 网址：www.shsmzj.com
 电邮：info@sanmecorp.com

Add: No.258, Fengcun Road, Qingcun County, Fengxian District,
 Shanghai 201414, China
 Tel: +86-21-5712 1166 5759 1188
 Fax: +86-21-5756 6188 5820 0089
 Website: www.sanmecrusher.com
 E-mail: sales@sanmecorp.com



山美股份官方微信

免费热线：400-921-5566
 售后专线：021-5712 7766

Free Hotline: 400-921-5566
 Service Center: +86-21-5712 7766

◎ 我们的产品在不断的更新和改进中，我们保留在未事先告知用户的情况下，更改参数及设计的权力。
Our products are constantly updated and improved, we reserve the right to change parameters and design without advance notification of customers.
 ◎ 照片中产品外观颜色与实际机型存在差异，颜色标准以实物为准。
If there are any discrepancy and difference between color of product appearance and actual machine type in the picture, color standard is subject to actual object.
 ◎ 本手册中的配置不一定是出厂标准配置，购买时请详细咨询我们。
Specifications and design in the brochures are not always the standard. Please consult us particularly when purchasing.